



**Digital Photo Printer  
CHC-S9045**

**Printer Driver Version 2  
Instruction Manual**

**Contents**

Using your printer with Windows computers -----	1
System requirements -----	1
Notes-----	2
Installing the printer driver for Windows 2000/XP -----	3
Uninstalling the printer driver for Windows 2000/XP-----	8
Installing the printer driver for Windows Vista -----	9
Uninstalling the printer driver for Windows Vista-----	13
Printing from application software -----	16
To cancel printing -----	20
Color correction -----	21
Troubleshooting -----	29

# SHINKO ELECTRIC CO., LTD. SOFTWARE LICENSE AGREEMENT

## **IMPORTANT**

**READ THIS AGREEMENT CAREFULLY BEFORE USING THE SOFTWARE ON THE CD-ROM SUPPLIED WITH THE PRINTER.**

**BY USING THIS SOFTWARE, YOU AGREE TO BE BOUND BY THE TERMS OF THIS AGREEMENT.**

**IF YOU DO NOT AGREE TO THE TERMS AND CONDITIONS OF THIS AGREEMENT, DO NOT USE THE SOFTWARE INCLUDING THE DOCUMENTS ON THE CD-ROM PROVIDED, AND PROMPTLY RETURN THE WHOLE PRODUCT TO YOUR DEALER.**

## **1. LICENSE**

SHINKO ELECTRIC CO., LTD. ("SHINKO") grants you the non-exclusive right to use one copy of the SOFTWARE under the terms and conditions of this Agreement.

## **2. RESTRICTIONS ON USE**

You may use the SOFTWARE on a single computer. You may not modify, reverse engineer, decompile, or disassemble the SOFTWARE.

## **3. DISCLAIMER OF WARRANTY**

This SOFTWARE is provided to you "AS IS" and without any warranty and liability of any kind.

SHINKO, its licensors or suppliers do not warrant that the functions contained in the SOFTWARE will meet your requirements or that the operation of the SOFTWARE will be uninterrupted or error free.

## **4. LIMITATION OF LIABILITY**

In no event will SHINKO, its licensors or suppliers be liable to you for any consequential, indirect, incidental, punitive or special damages, including any lost profits or lost savings, or other damages arising from the use or inability to use the SOFTWARE even if advised of the possibility of such damages.

Some States or jurisdictions do not allow the exclusion or limitation of incidental or consequential damages, so the above limitations may not apply to you.

## **5. TERM; TERMINATION**

This license is effective until terminated. You may terminate this license at any time by destroying the SOFTWARE and all copies in any form. This license will terminate without notice to you if you fail to comply with any term or condition of this license. Upon termination you must destroy the SOFTWARE and all copies in any form.

## **6. EXPORT RESTRICTIONS**

You agree to comply fully with all international and national laws and regulations that apply to the SOFTWARE, and your use thereof, including, but not limited to, end-user, end-use and destination restrictions issued by Japanese and other governments. Without limiting the generality of the foregoing, you agree not to export, directly or indirectly, re-export, divert, or transfer the SOFTWARE or any direct product thereof to any destination, company or person restricted or prohibited by national and international laws or regulations or laws or regulations of any other applicable jurisdiction.

## Using your printer with Windows computers

The supplied CHC-S9045 printer driver enables you to print an image stored on your computer with the SHINKO CHC-S9045 digital photo printer. To print an image from the computer, you need appropriate application software that can open the image and print with the printer.

### System requirements

To use the supplied printer driver, you need a computer that meets the following system requirements:

OS:	Windows 2000 Professional / Windows XP Home Edition / Windows XP Professional(32bit)/ Windows Vista (32bit)
CPU:	Pentium 150 MHz or better (Windows 2000 Professional) Pentium 300 MHz or better (Windows XP Home Edition / Windows XP Professional) x86 processor 1 GHz or better (Windows Vista)
RAM:	64 MB or more (Windows 2000 Professional) 128 MB or more (Windows XP Home Edition / Windows XP Professional) 1 GB or more (Windows Vista Home Premium / Business / Ultimate)
Disk free space:	650 MB or more (Windows 2000 Professional) 1.5 GB or more (Windows XP Home Edition / Windows XP Professional) 15 GB or more (Windows Vista)
Port:	A built-in USB port on the personal computer.
CD-ROM drive:	For software installation.

## Notes

- (1) Be sure to connect the printer directly to your computer. Connecting it via a USB hub may cause the printer to not operate properly.
- (2) Do not use the printer together with other USB devices except a USB keyboard or mouse.
- (3) Do not connect two or more CHC-S9045 digital photo printers at the same time.
- (4) Do not unplug the USB cable during data transferring or printing. To do so may cause the printer to not operate properly.
- (5) The printer driver cannot be used for network printer.
- (6) Microsoft and Windows are either registered trademarks or trademarks of Microsoft Corporation.
- (7) Other names and products not mentioned above may be registered trademarks or trademarks of their respective companies.
- (8) For questions or problems please contact [\*\*\*chc-master@tokyo.shinko-elec.co.jp\*\*\*](mailto:chc-master@tokyo.shinko-elec.co.jp).

# Installing the printer driver for Windows 2000/XP

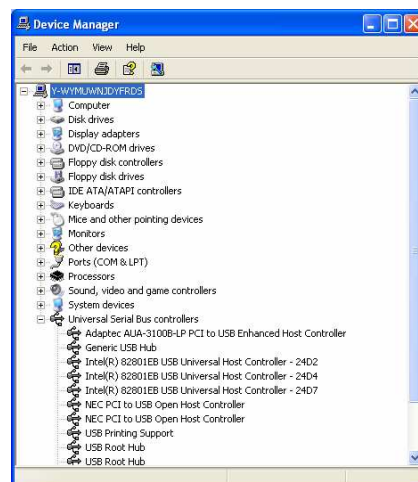
## NOTES

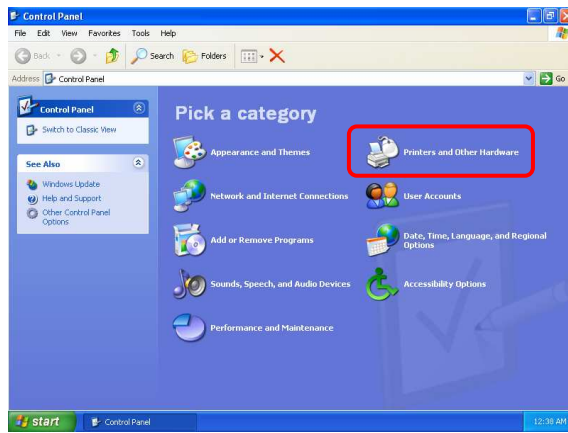
- (1) Make sure that the printer is not connected to the computer.
- (2) The explanations in this section are based on Windows XP. On another version of Windows, the actual screen contents and procedures may vary from those shown.

1. Turn on your computer and start Windows.
2. With Windows 2000 Professional or Windows XP, be sure to log on with Administrator privileges.
3. Be sure to close all running programs before installing the software.
4. Turn the printer on.
5. Connect the printer to your computer, using the USB cable.

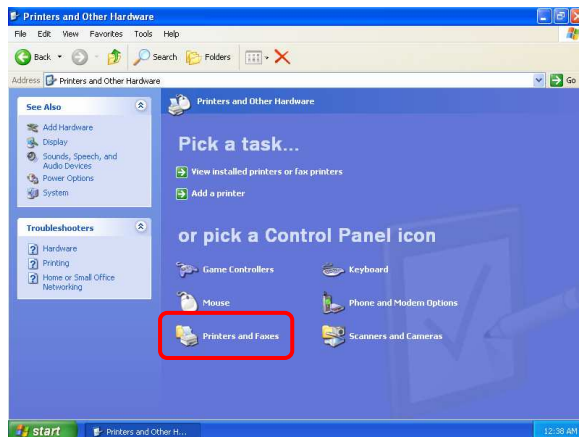
## Windows 2000 Professional / Windows XP Home Edition / Windows XP Professional.

When connection is established, USB printing support is automatically enabled by Device Manager.

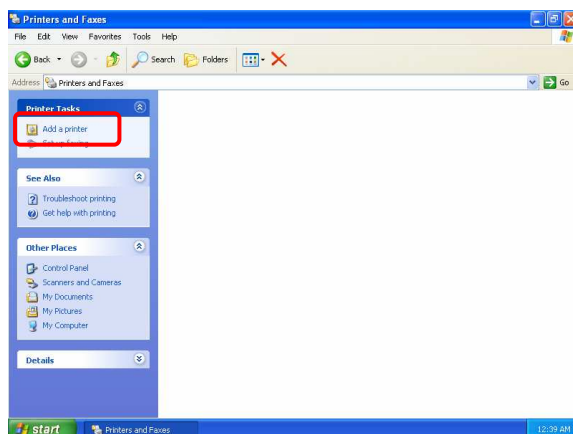




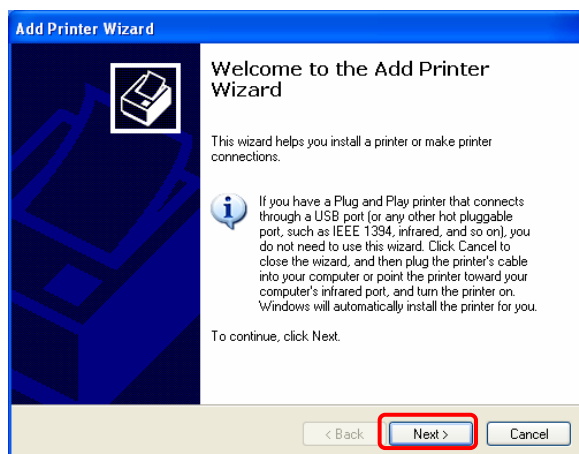
6. Open the Control Panel window from "Start", and then click "Printers and Other Hardware".



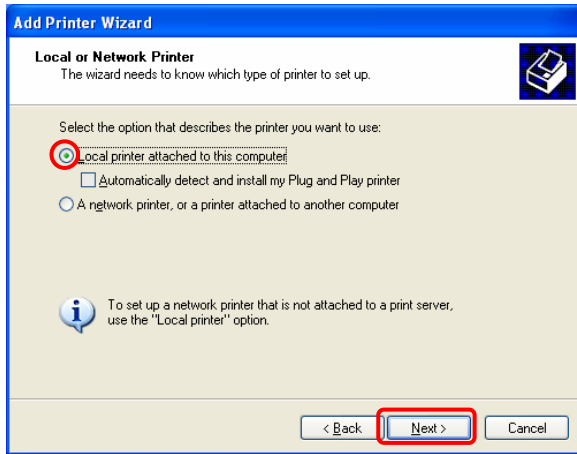
7. Select "Printers and Faxes".



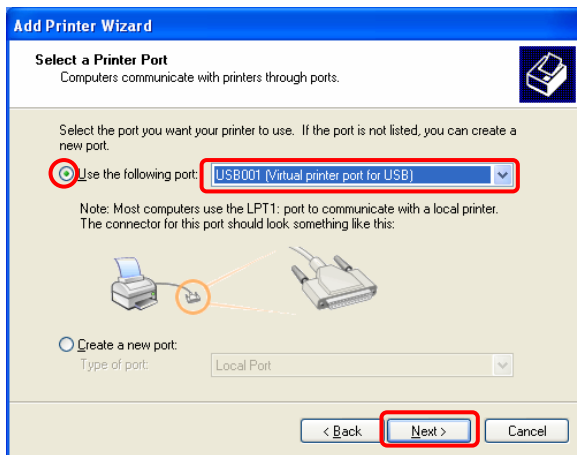
8. Click "Add a printer".



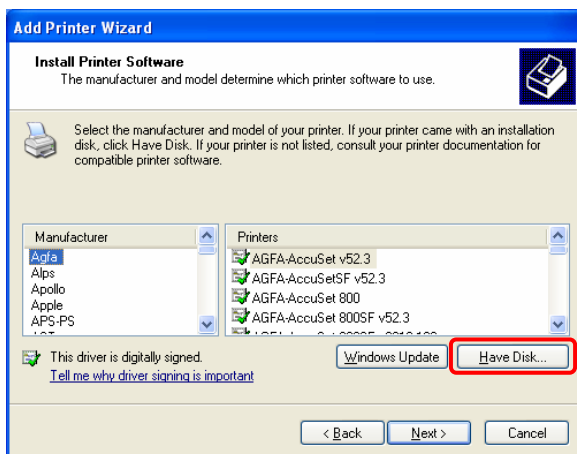
9. Click "Next".



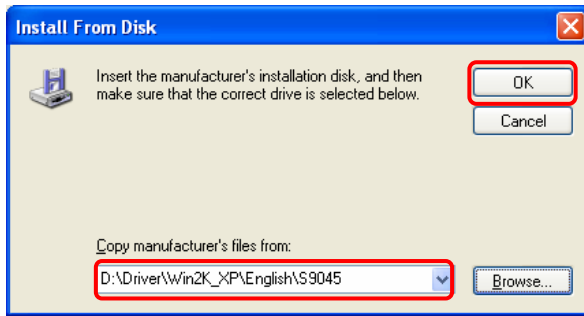
10. Check "Local printer attached to this computer" and uncheck "Automatically detect and install my Plug and Play printer", and then click "Next".



11. Check "Use the following port", then select "USB\*\*\* (Virtual printer port for USB)". Click "Next".



12. Click "Have Disk..."

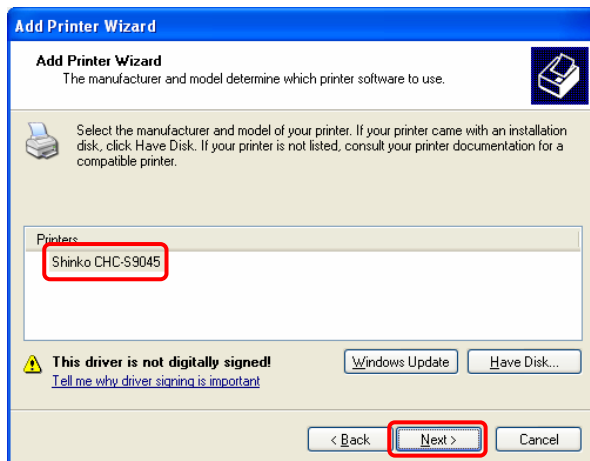


13. Insert the supplied CD-ROM.

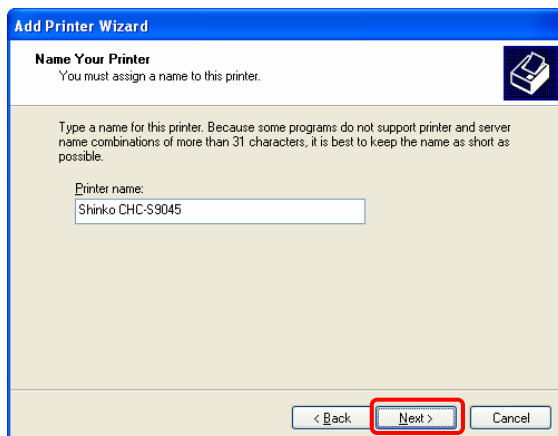
Click "Browse..." to select the folder "S9045" under the folder for each version of Windows.

For Windows XP:

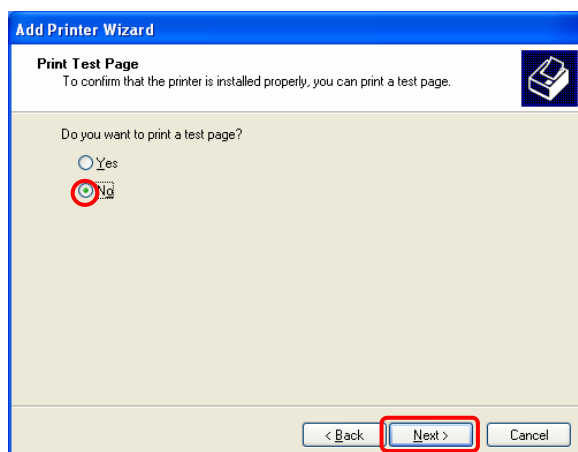
Select "D:\Driver\Win2K\_XP\English\S9045"



14. Select "Shinko CHC-S9045", and then click "Next".

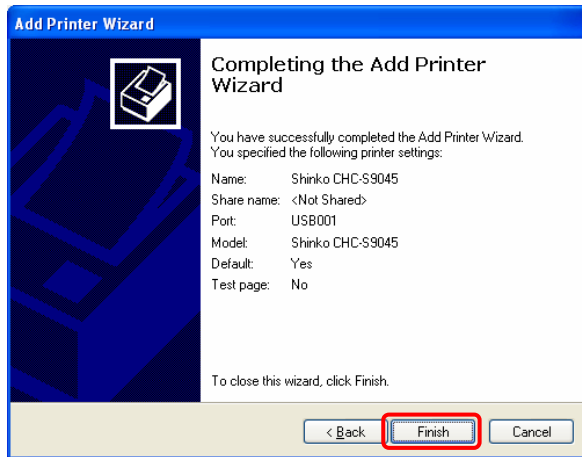


15. Click "Next".



16. Check "No", and then click "Next".

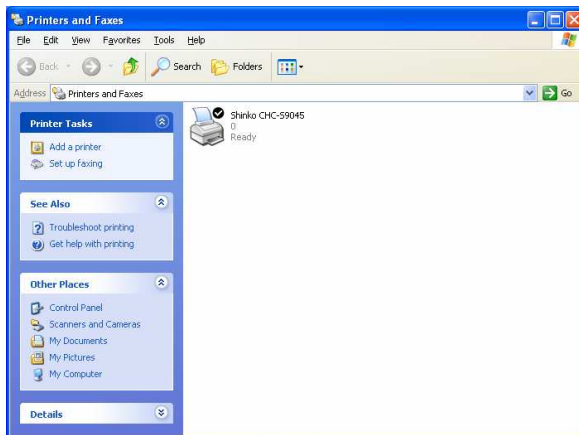




17. Click "Finish".



18. Click "Continue Anyway".



19. The "Shinko CHC-S9045" printer icon appears in the "Printers and Faxes" window.

## Uninstalling the printer driver for Windows 2000/XP

To uninstall the printer driver, follow the procedures below.

### **Windows 2000 Professional / Windows XP Home Edition / Windows XP Professional.**

1. Unplug the USB cable from your computer.
2. Click "Start" and then "Printers and Faxes" in the Start menu.  
For Windows 2000 users: Click "Start", "Settings", and then "Printers" in the Start menu. The Printers folder will open.
3. Right-click on the "Shinko CHC-S9045" printer icon and select "Delete".
4. Click "Yes" in the message window "Are you sure you want to delete the printer 'Shinko CHC-S9045'?"  
The relevant files in the system will be deleted.
5. Click "Server Properties" in the "File" menu.
6. Select the "Drivers" tab, select "Shinko CHC-S9045", and then click "Remove".
7. Follow the on-screen instructions when a confirmation message appears.

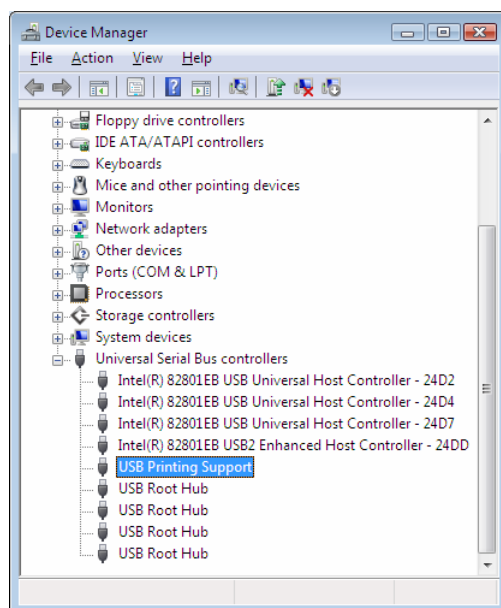
# Installing the printer driver for Windows Vista

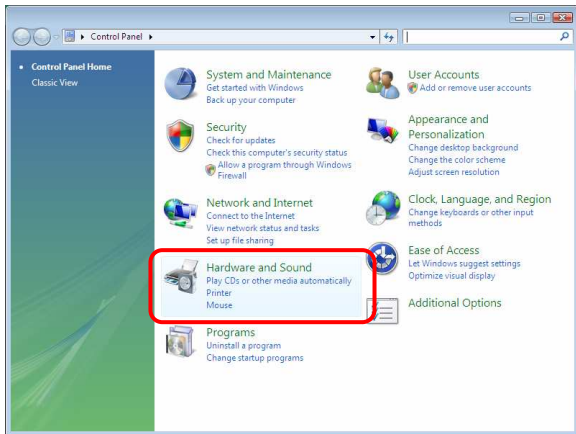
## NOTES

- (1) Make sure that the printer is not connected to the computer.
- (2) The explanations in this section are based on Windows Vista Business. On another edition of Windows Vista, the actual screen contents and procedures may vary from those shown.

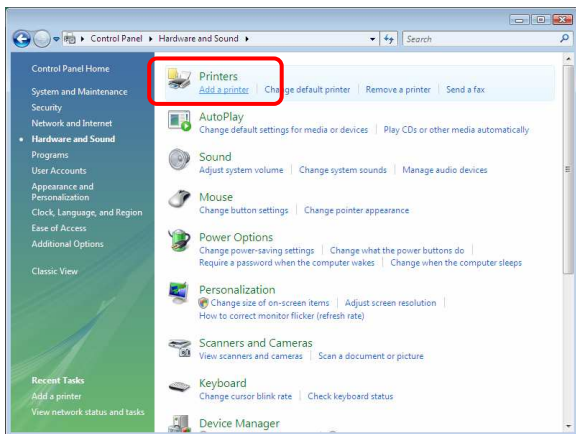
1. Turn on your computer and start Windows.
2. Be sure to log on with "Administrator" privileges.
3. Be sure to close all running programs before installing the software.
4. Turn the printer on.
5. Connect the printer to your computer, using the USB cable.

When connection is established, USB printing support is automatically enabled by Device Manager.

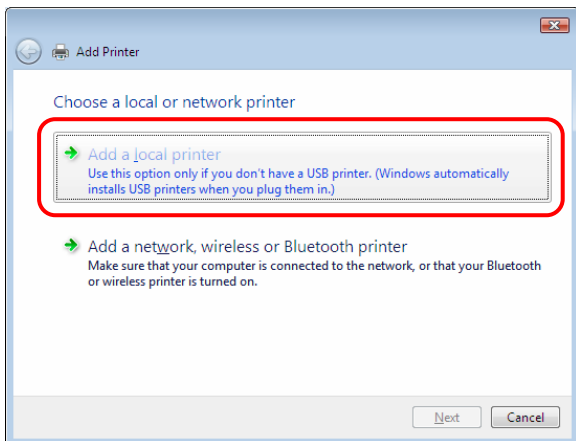




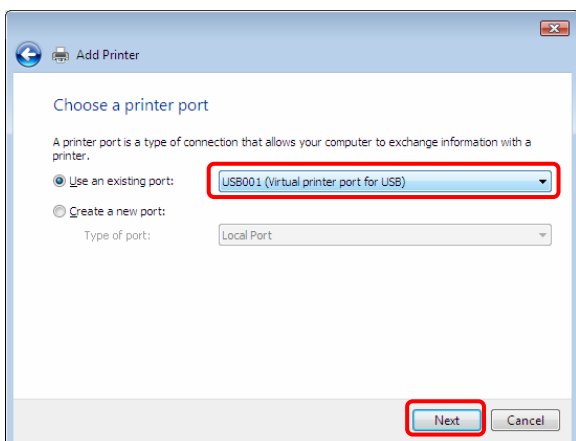
6. Open the Control Panel window from Windows Start menu, and then click "Hardware and Sound".



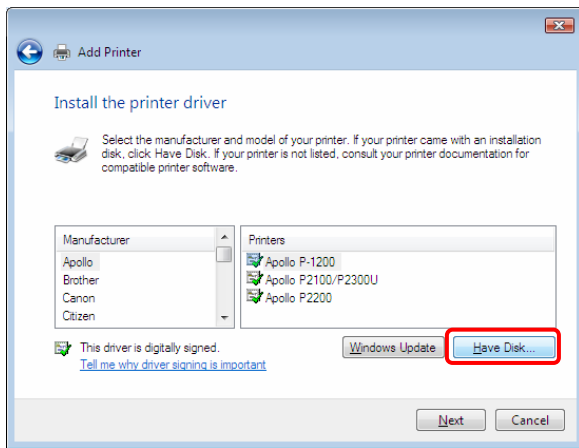
7. Click "Add a printer" from the "Printers".



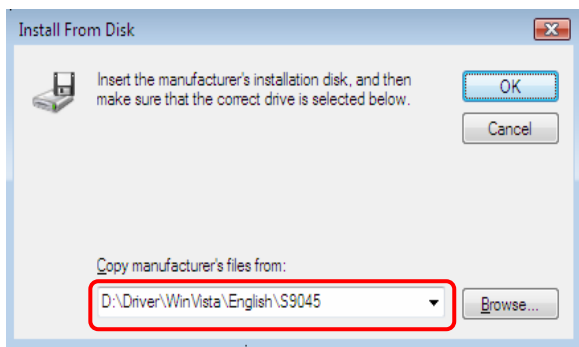
8. Click "Add a local printer".



9. Select "USB\*\*\*(Virtual printer port for USB)" at "Use an existing port:", and then click "Next".



10. Click "Have Disk...".

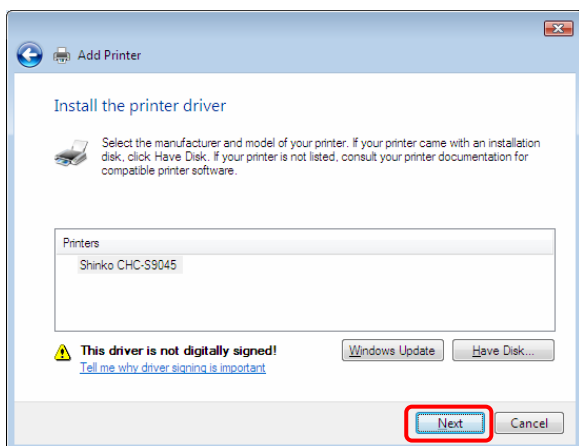


11. Insert the Printer Driver CD-ROM.

Click "Browse..." to select the "S9045" subfolder under the folder for Windows Vista.

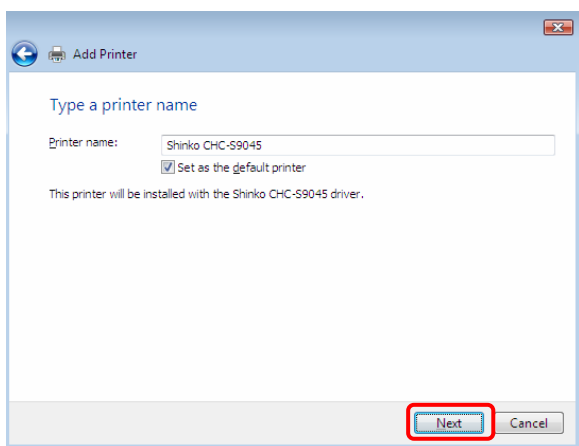
For Windows Vista:

"D:\Driver\WinVista\English\S9045"

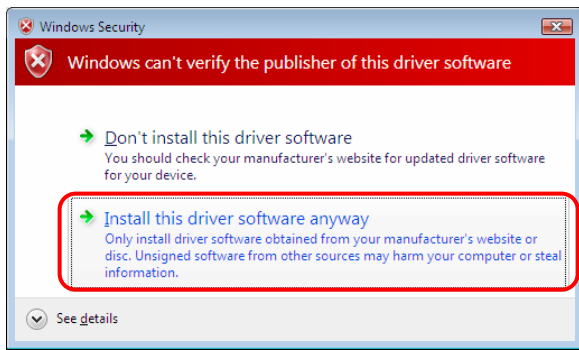


12. Click "Next".

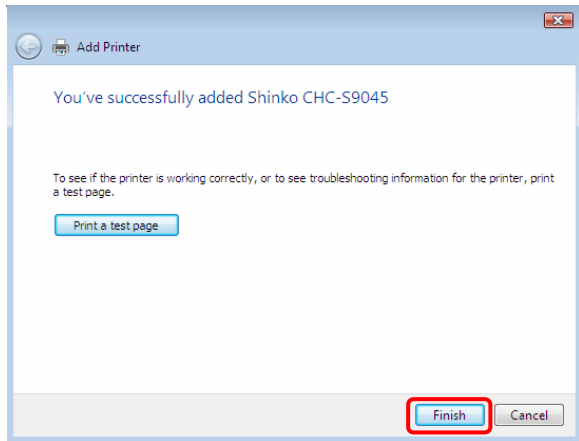
Note: User Account Control message may appear stating that the Windows needs your permission to continue. Click "Continue" to allow the driver to install.



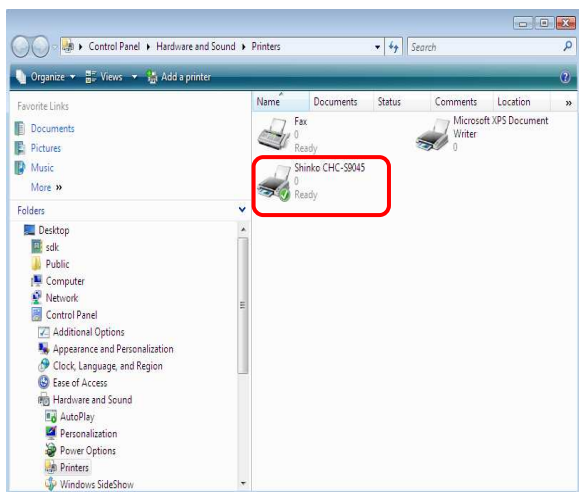
13. Click "Next".



14. Click "Install this driver software anyway".



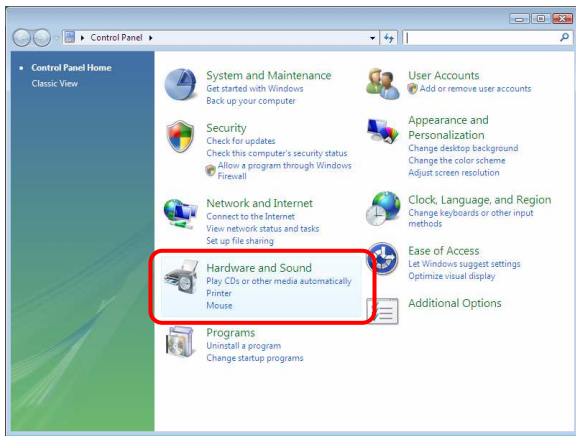
15. Click "Finish".



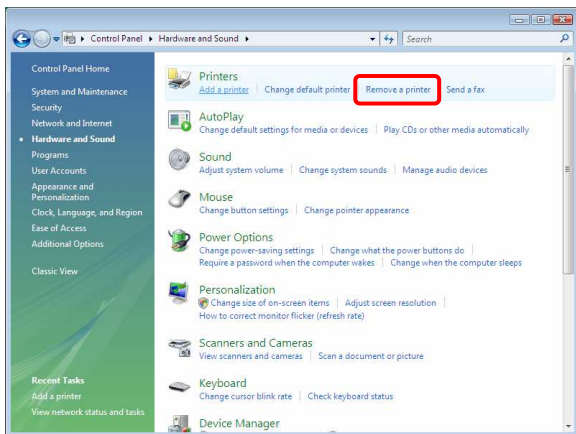
16. The "Shinko CHC-S9045" printer icon appears in the "Printers" window.

# Uninstalling the printer driver for Windows Vista

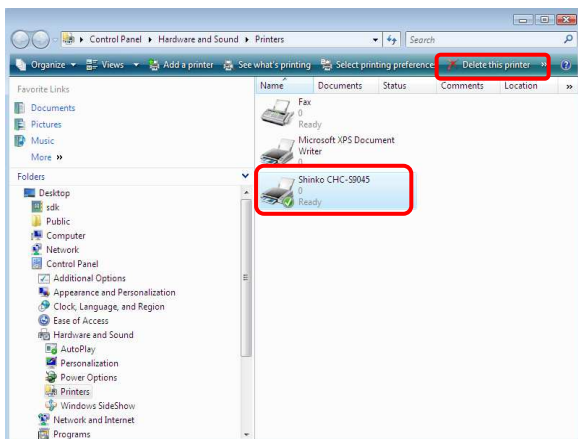
To uninstall the printer driver, follow the procedures below.



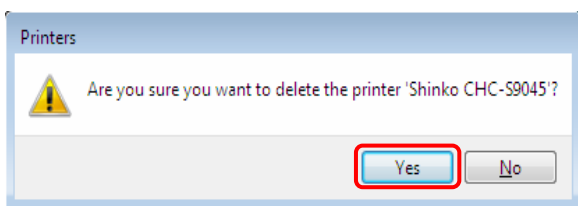
1. Unplug the USB cable from your computer.
2. Open the Control Panel window from Windows Start menu, and then click "Hardware and Sound".



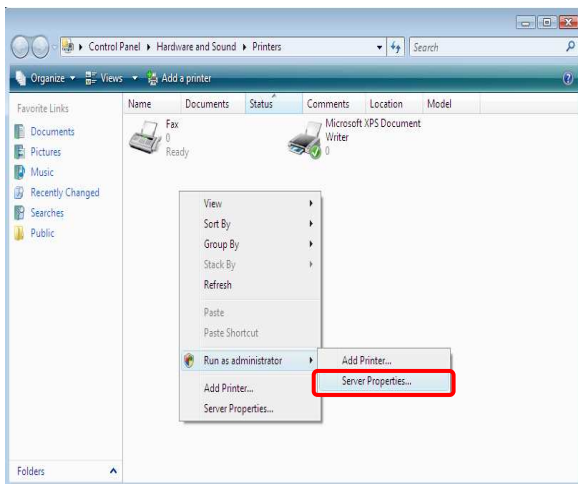
3. Click "Remove a printer" from the "Printers".



4. Select "Shinko CHC-S9045" icon, and then Click "Delete this printer".

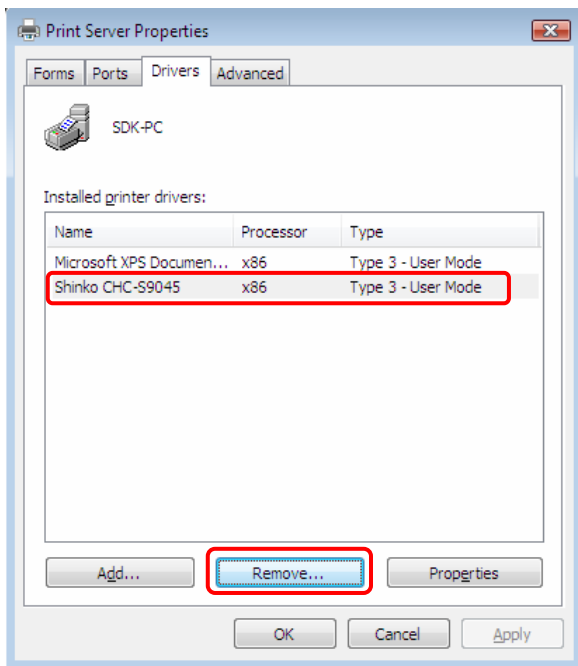


5. Click "Yes".

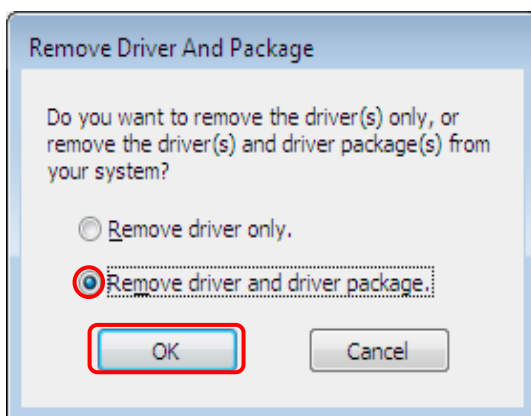


6. Right-click on the "Printers" window, and select "Run as administrator", and then click "Server Properties...".

Note: User Account Control message may appear stating that the Windows needs your permission to continue. Click "Continue" to allow the driver to install.

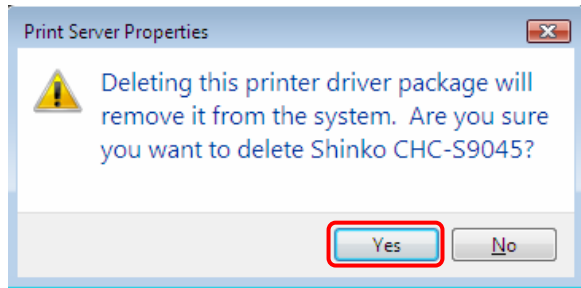


7. Select the "Drivers" tab, select "Shinko CHC-S9045", and then click "Remove...".

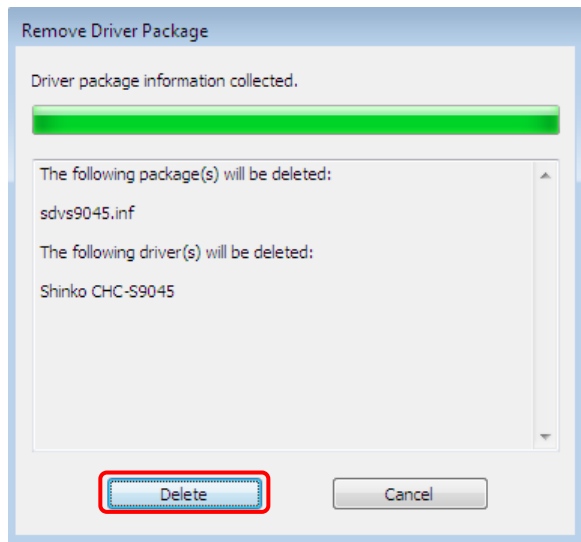


8. Select "Remove driver and driver package.", and then click "OK".

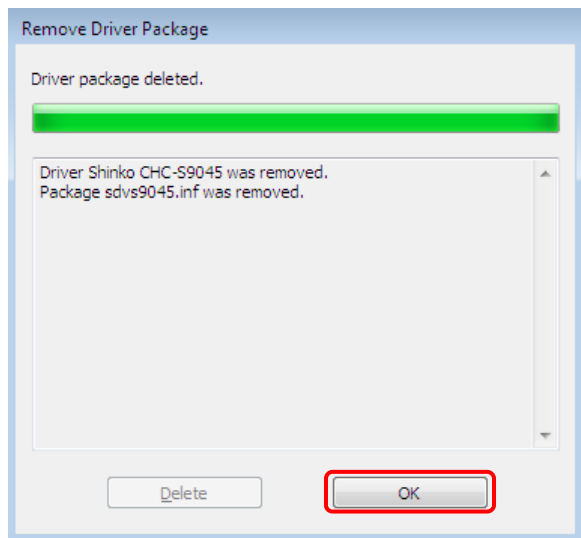




9. Click "Yes".



10. Click "Delete".



11. Click "OK".

## Printing from application software

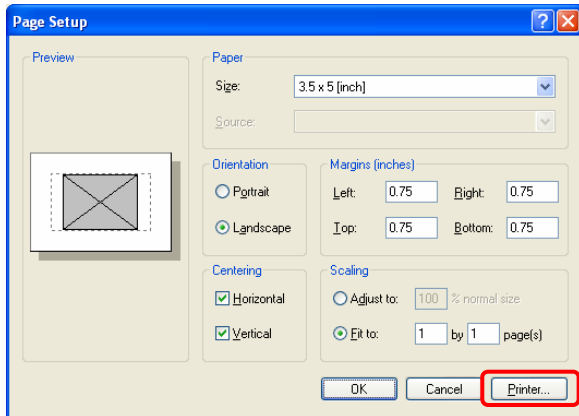
You can use the "Print" command of application software to print an image from your computer with CHC-S9045 digital photo printer.

### NOTES

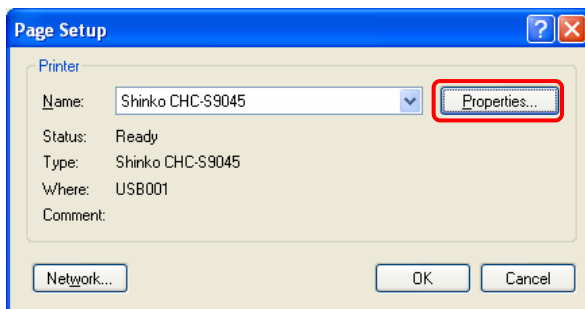
- (1) **Before printing, make sure that the printer is properly connected to your computer with a proper USB cable.**
- (2) This section describes setting up the driver and printing from the Windows "Paint" program as typical application software.
- (3) The explanation in this section is based on Windows XP.
- (4) The maximum image size for each paper size is as follow.

Paper size selected	Maximum image size in pixel units
3.5 x 5 [inch]	1,548 x 1,088
6 x 4 [inch]	1,844 x 1,240
5 x 7 [inch]	1,548 x 2,140
6 x 9 [inch]	1,844 x 2,740
Sticker Paper Size	1,726 x 1,092

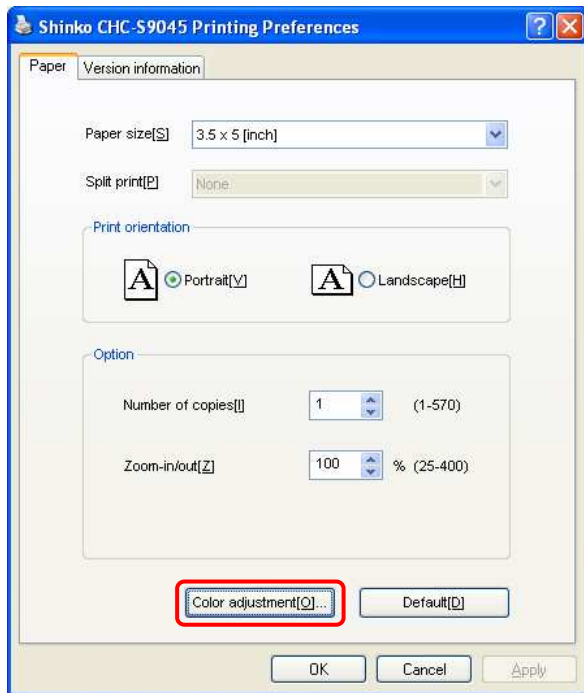
1. Start the application software, and open the image to be print.
2. Click "Page Setup" from the "File" menu of the application.  
The "Page Setup" dialog window appears.



3. Page Setup.  
Your application software may show a different appearance.
- 3-1. Click "Printer" to show the "Page Setup" dialog window.



- 3-2. Select "Shinko CHC-S9045"
- 3-3. Click "Properties..."  
The Shinko CHC-S9045 Printing Preferences window is displayed.



#### 3-4. Paper size

In the "Paper" tab window, choose a paper size loaded in the printer.

#### 3-5. Check the Print orientation of an image either from "Portrait" or "Landscape".

#### 3-6. Number of Copies

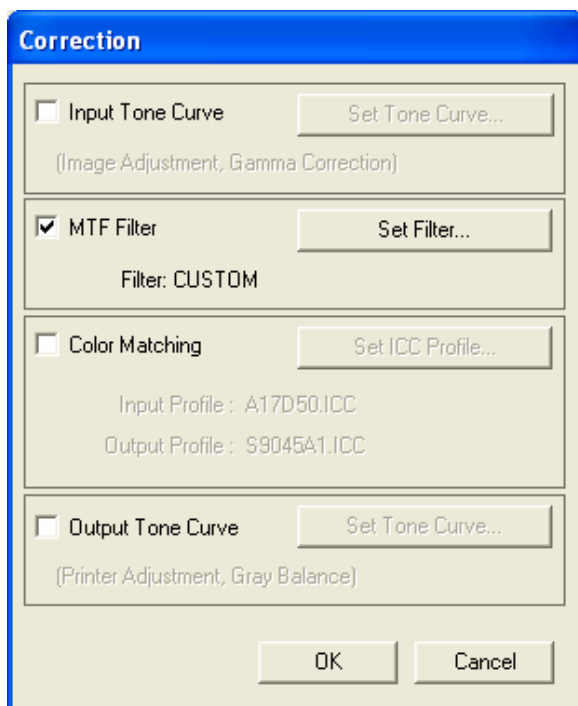
Set the number of copies.

*Effective Range: 1 ~ 570 (Default: 1)*

#### 3-7. Zoom In / Out

Set percentage at "Zoom in / out".  
The origin for image scaling is on the upper-left corner.

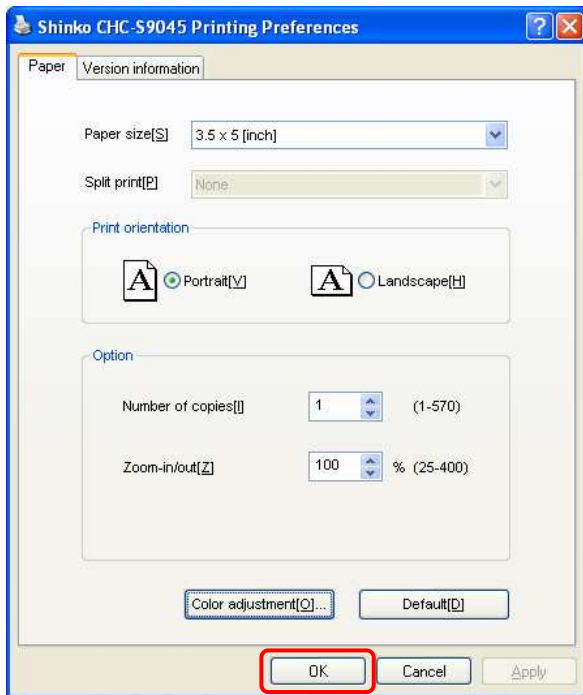
*Effective Range: 25 ~ 400 (Default: 100)*



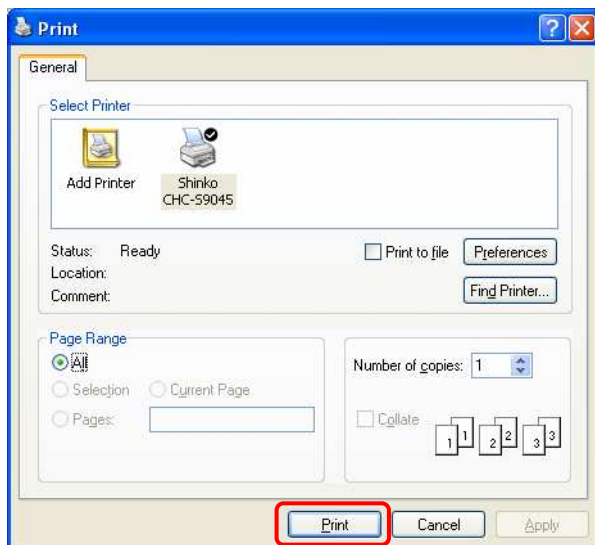
#### 3-8. Color adjustment

Clicking this button shows the "Correction" window for adjusting the print results.

See the section of "Color correction" in this document.



- 3-9. Click "OK" to close the "Page Setup" dialog window.



4. Click "Print" from the "file" menu of the application software.  
The "Print" dialog window appears.
5. Click "Print".  
The printer starts printing.

## To cancel printing

- When the application software shows its printing dialog window, click "Stop" or "Cancel".

The print job is canceled and the dialog window is closed.

- When the print job has already entered into the printer queue,
  1. Click "Start" and then "Printers and Faxes" in the Start menu.  
For Windows 2000 users: Click "Start", "Settings", and then "Printers" in the Start menu. The Printers folder will open.
  2. Double-click on the "Shinko CHC-S9045" icon.  
The "Shinko CHC-S9045" window is displayed. The documents in the print queue are listed in the window.
  3. Click the document you want to cancel.
  4. Click "Cancel" in the "Document" menu.  
The document is removed from the list and the print job is canceled.  
For the details, refer to the Windows documentation.

### NOTES

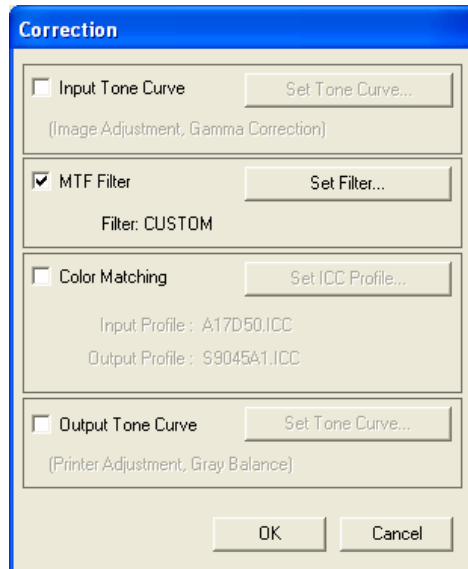
If printing has already started, do not cancel printing.

Please wait until the printing is completed.

## Color correction

### Correction dialog window

Click "Color adjustment" in the "Shinko CHC-S9045 Printing Properties" window, and then the "Correction" window will be displayed for adjusting the color to print.



#### Input Tone Curve:

Checking this option enables the tone curve correction for input colors.

#### Output Tone Curve:

Checking this option enables the tone curve correction for output colors as the final process in the color adjustments.

#### Set Tone Curve...:

Clicking this button displays the "Input Tone Curve" or "Output Tone Curve" window to allow you to edit the tone curves independently.

#### MTF Filter:

Checking this option enables the sharp/un-sharp mask filter to adjust resulting prints.

#### Set Filter...:

Clicking this button displays the "MTF" window to allow you to set a set of values for sharp/un-sharp mask filter.

**Filter:**

A parameter file name will be displayed as chosen in the "MTF" window.  
"CUSTOM" is displayed upon manually setting the parameter.

**Color Matching:**

Checking this option enables the color matching process for input images.

**Set ICC Profile...:**

Clicking this button displays the "Color Matching " window to allow you to define how the color matching applies to an input image.

**Input ICC Profile:**

An input ICC profile name is displayed to be used for the color matching process.

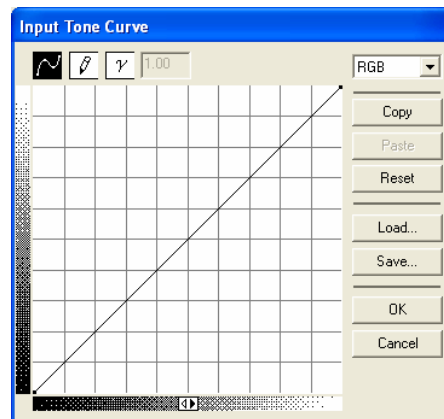
**Output ICC Profile:**

An output ICC profile name is displayed to be used for the color matching process.



## Input/Output Tone Curve dialog window

In the "Correction" window, clicking the "Set Tone Curve" button displays the "Input Tone Curve" or "Output Tone Curve" window respectively.



The setup procedures in the "Input Tone Curve" and "Output Tone Curve" window are the same.

The explanation in this section is based on "Input Tone Curve".



Clicking this icon enables to edit the current tone curve by spline curve method.

By clicking on the edit area, you can set desired edit points where a smooth curve lies.



Clicking this icon enables to edit the current tone curve at every desired input levels.

The tone curve will be formed as you point and/or drag the mouse pointer.



Clicking this icon enables to edit the current tone curve by specifying a gamma value.

Type a desired gamma value in the text box next to this icon.



You can choose a color channel to edit.

For "Input Tone Curve", you can choose any one from "RGB", "R", "G", and "B".

For "Output Tone Curve", you can choose any one from "YMC", "Y", "M", and "C".

**Copy:**

Clicking this button copies the curve of the current channel.

**Paste:**

Clicking this button pastes the curve copied by the Copy button to the current channel.

**Reset:**

Clicking this button resets the current curve to linear line.

**Load:**

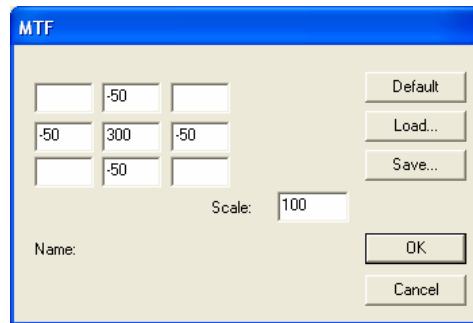
Clicking this button allows you to load a tone curve saved in a file.


**Save:**

Clicking this button allows you to save the current tone curve into a file.

## MTF dialog window

In the "Correction" window, clicking the "Set Filter..." button displays the "MTF" window, where you can define a set of values for sharp/un-sharp mask filter along with brightness.



 (3 x 3 text box)

You can enter a set of values for sharp/un-sharp mask filter in these text boxes. (Effective range: -9999 to 9999)

### Scale:

The value entered in this text box determines the brightness of a resulting print. (Effective range: 1 to 99999)

The brightness is determined by the sum of the values entered in the 3x3 text box (A) and the value entered in the Scale text box (B) as follow.

A=B: The brightness of the image will stay.

A<B: The brightness will decrease.

A>B: The brightness will increase.

### Name:

A file name is displayed from which the current parameter set is loaded.

### Default:

Clicking this button resets all values to default.

### Load:

Clicking this button allows you to load a set of parameters saved in a file.

### Save:

Clicking this button allows you to save the set of parameters into a file.

## Example settings for filter parameters

- (1) The figure below shows an example filter parameters for edge enhancement.

	-50	
-50	300	-50
	-50	

Scale: 100

With this example, the brightness of the image will stay as the original, since the sum of the five values is 100 as same as the value of Scale. Adding values to the rest of four diagonal corners will extend the area that affects the target pixel.

The difference between the center and its neighbors is greater, the effect will enhance further.

Match the Scale value to a sum of the values entered in the 3x3 text box to maintain the brightness of the current image.

- (2) The figure below shows an example filter parameters for blurred edge.

	10	
10	60	10
	10	

Scale: 100

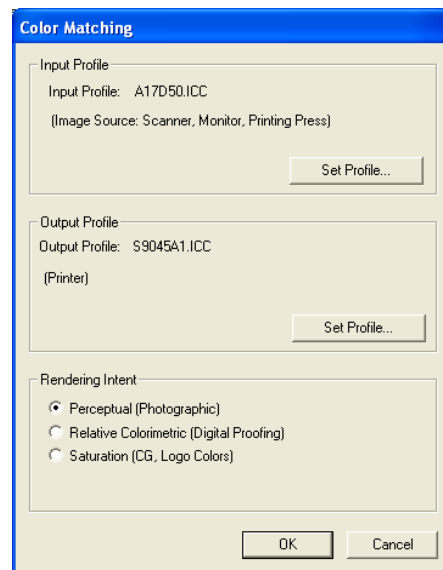
With this example, the brightness of the image will stay as the original, since the sum of the five values is 100 as same as the value of Scale. Adding values to the rest of four diagonal corners will extend the area that affects the target pixel.

The difference between the center and its neighbors is less, the effect will enhance further.

Match the Scale value to a sum of the values entered in the 3x3 text box to maintain the brightness of the current image.

## Color Matching dialog window

In the "Correction" window, clicking the "Set ICC Profile..." button displays the "Color Matching" window, where you can choose ICC profiles and a Rendering Intent.



### Input Profile:

An input ICC profile name is displayed if loaded.

### Output Profile:

An output ICC profile name is displayed if loaded.

### Set Profile...:

Clicking this button allows you to load an input ICC profile or an output ICC profile respectively.

At the Input Profile, load an ICC profile for the input device by which the current image was created.

At the Output Profile, load an ICC profile for the printer.

## Rendering Intent

You can choose Rendering Intent from the three options as shown in the table below.

Rendering Intent	Features
Perceptual (Photographic)	Maps color smoothly, preserving relationships between similar colors, and generally provides the best reproduction of photographs.
Relative Colorimetric (Digital Proofing)	Represents any remaining out of gamut colors by the closest match and is generally a good choice for proof print.
Saturation (CG, Logo Colors)	Prints punchy business charts and graphs, preserving the saturation or brightness of colors.

## Troubleshooting

When the printer driver displays an error message on the computer screen, refer to the following table below for its cause and correction.

Error Messages	Possible Causes	Possible Solutions
The printer is not connected or turned off.	The printer is not connected to the computer.	Connect the printer to the computer with a proper USB cable.
Make sure the printer cable is attached to both the printer and the computer and that power is supplied to the printer.	The printer is not powered on.	Make sure that the power is supplied to the printer and turn on the power switch of the printer.
Printing is not possible with the specified paper size. Please check the paper size.	The size of paper loaded in the printer does not match the size specified in the current print job.	Load the correct size of paper to the printer or print again with the same paper size in the printer after canceling the current print job.
Control circuit error. (xxh) Please contact service center.	A hardware malfunction may have occurred in the printer.	Consult the distributor of the printer or our support center.
Mechanical circuit error. (xxh) Please contact service center.		
Sensor error. (xxh) Please contact service center.		
Temperature sensor error. (xxh) Please contact service center.		
Paper jam. (xxh) Please remove jammed paper.	A paper jam has occurred.	Remove the jammed paper in accordance with the user manual of the printer.
The cover is open. Please close the cover.	The printer cover is open.	Close the printer cover.
Out of ink ribbon. Please check new ink ribbon.	The ink ribbon has run out or is not loaded.	Remove the used ink ribbon and load a new one.
No paper. Please load paper.	The paper roll has run out or is not loaded.	Load a new one.
No card. Please insert card.	The ink ribbon ID card is not loaded.	Load a correct ink ribbon ID card.

Error Messages	Possible Causes	Possible Solutions
Card cannot be used. Please check card.	The printer does not support the ink ribbon ID card loaded.	Check if the ink ribbon ID card is correct.
No prints left on card. Please insert a new card.	The ink ribbon ID card has maxed out.	Remove the used ink ribbon ID card and load a new one.
Unsupported file format.	The file to read is not in the applicable format; or the file is broken.	Check if the file is correct.
Can not use this profile on current ribbon and image mode.	Incorrect ICC profile(s) are specified for the current settings.	Check if the ICC profile(s) are compatible with the current settings.
Can not find right ICC Profile.	The selected ICC profile is not found; or the ICC Profile has collapsed.	Check if the ICC Profile exists and is not broken.
An integer between –9999 and 9999 is required.	In "MTF" dialog window, the value(s) in the 3x3 text box are out of range.	Reenter value(s) in the rage of -9999 to 9999.
An integer between 1 and 99999 is required.	In "MTF" dialog window, the value in the Scale text box is out of range.	Reenter a value in the rage of -9999 to 9999.
Can not write file.	The current disk drive does not have enough space to save the file.	Check the current disk space.
Can not create file.	The specified file to write has the same name as existing one with write protected.	Save the file in a different name.
Can not open file.	Another program uses the file you specify to read or save.	Save the file in a different name or quit the program using the file.
Can not read file.	The file to read has less data than expected.	Use another correct file.